



wisGROUP

Impressive CV Spare Parts

KING PIN

www.wisgroup.com.tr

new to range

E24

E24 55 R
ECE Type Approval Certificate



W20017

KING PIN



KING PIN 2"
KING PIN 2"



MODEL	START YEAR	END YEAR	OEM / COMPARISON NO	TECHNICAL SPECIFICATIONS
JSK 26 D	-	-	KZ1008	OD : 50,8 mm
JSK 36 C	-	-		h : 37 mm
JSK 36 DA	-	-		
JSK 36 DV	-	-		
JSK 37 CV	-	-		
JSK 37 CW	-	-		
JSK 37 CZ	-	-		
JSK 37 EA	-	-		
JSK 37 EAW	-	-		
JSK 37 ER	-	-		
JSK 37 ERW	-	-		
JSK 37 EW	-	-		
JSK 42	-	-		
JSK 42 K2	-	-		
JSK 42 K6	-	-		
JSK 42 K7	-	-		
JSK 42 K8	-	-		
JSK 42 MK 162	-	-		

W20018

KING PIN



KING PIN 2"
KING PIN 2"



MODEL	START YEAR	END YEAR	OEM / COMPARISON NO	TECHNICAL SPECIFICATIONS
JSK 26 D	-	-	KZ1010	OD : 50,8 mm
JSK 36 C	-	-		h : 34 mm
JSK 36 DA	-	-		
JSK 36 DV	-	-		
JSK 37 CV	-	-		
JSK 37 CW	-	-		
JSK 37 CZ	-	-		
JSK 37 EA	-	-		
JSK 37 EAW	-	-		
JSK 37 ER	-	-		
JSK 37 ERW	-	-		
JSK 37 EW	-	-		
JSK 42	-	-		
JSK 42 K2	-	-		
JSK 42 K6	-	-		
JSK 42 K7	-	-		
JSK 42 K8	-	-		
JSK 42 MK 162	-	-		

W20019

KING PIN



KING PIN 2"
KING PIN 2"



E24

MODEL	START YEAR	END YEAR	OEM / COMPARISON NO	TECHNICAL SPECIFICATIONS
JSK 26 D	-	-	KZ1012	OD : 50,8 mm
JSK 36 C	-	-		h : 33 mm
JSK 36 DA	-	-		
JSK 36 DV	-	-		
JSK 37 CV	-	-		
JSK 37 CW	-	-		
JSK 37 CZ	-	-		
JSK 37 EA	-	-		
JSK 37 EAW	-	-		
JSK 37 ER	-	-		
JSK 37 ERW	-	-		
JSK 37 EW	-	-		
JSK 42	-	-		
JSK 42 K2	-	-		
JSK 42 K6	-	-		
JSK 42 K7	-	-		
JSK 42 K8	-	-		
JSK 42 MK 162	-	-		

W20020

KING PIN



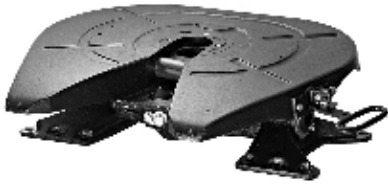
KING PIN 3.5"
KING PIN 3.5"



MODEL	START YEAR	END YEAR	OEM / COMPARISON NO	TECHNICAL SPECIFICATIONS
JSK 38 C1	-	-	KZ1410	OD : 88,9 mm
JSK 38 C2	-	-		h : 34 mm
JSK 38 G1	-	-		
JSK 38 G2	-	-		
JSK 38 MC	-	-		
JSK 38 MC-2	-	-		
JSK 50	-	-		

W20021

KING PIN



KING PIN 3.5"
KING PIN 3.5"



MODEL	START YEAR	END YEAR	OEM / COMPARISON NO	TECHNICAL SPECIFICATIONS
JSK 38 C1	-	-	KZ1412	OD : 88,9 mm
JSK 38 C2	-	-		h : 33 mm
JSK 38 G1	-	-		
JSK 38 G2	-	-		
JSK 38 MC	-	-		
JSK 38 MC-2	-	-		
JSK 50	-	-		

W19468

KING PIN



MİL 2"
SHAFT 2"



E24

MODEL	START YEAR	END YEAR	OEM / COMPARISON NO	TECHNICAL SPECIFICATIONS
KZ1008	-	-	KZ1012-01	OD : 50,8 mm
KZ1010	-	-		
KZ1012	-	-		

W19469

KING PIN



TABLA 2"
PLATE 2"



MODEL	START YEAR	END YEAR	OEM / COMPARISON NO	TECHNICAL SPECIFICATIONS
KZ1008	-	-	KZ1008-06	h : 37 mm

W20010

KING PIN



MİL 3.5"
SHAFT 3.5"



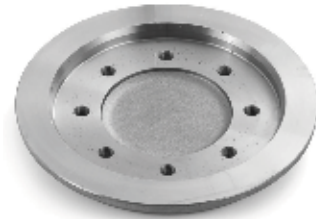
MODEL	START YEAR	END YEAR	OEM / COMPARISON NO	TECHNICAL SPECIFICATIONS
KZ1410	-	-	KZ1412-01	OD : 88,9 mm
KZ1412	-	-		

W20011

KING PIN



TABLA 2"- 3.5"
PLATE 2"- 3.5"

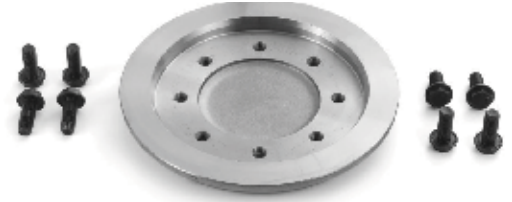


MODEL	START YEAR	END YEAR	OEM / COMPARISON NO	TECHNICAL SPECIFICATIONS
KZ1010	-	-	KZ1010-02	h : 34 mm
KZ1410	-	-		

W20014



KING PIN



ÇİVATALI TABLA 2" PLATE WITH BOLTS 2"

MODEL	START YEAR	END YEAR	OEM / COMPARISON NO	TECHNICAL SPECIFICATIONS
KZ1008	-	-	KZ1008-04	M : (8 QTY) M14*35 C12,9 DIN 6921
				h : 37 mm

W20015



KING PIN



ÇİVATALI TABLA 2"- 3.5" PLATE WITH BOLTS 2"- 3.5"

MODEL	START YEAR	END YEAR	OEM / COMPARISON NO	TECHNICAL SPECIFICATIONS
KZ1010	-	-	KZ1010-04	M : (8 QTY) M14*35 C12,9 DIN 6921
KZ1410	-	-		h : 34 mm

W20016

KING PIN



CİVATALI TABLA 2"- 3.5"
PLATE WITH BOLTS 2"- 3.5"



MODEL	START YEAR	END YEAR	OEM / COMPARISON NO	TECHNICAL SPECIFICATIONS
KZ1012	-	-	KZ1012-04	M : (8 QTY) M14*35 C12,9 DIN 6921
KZ1412	-	-		h : 33 mm