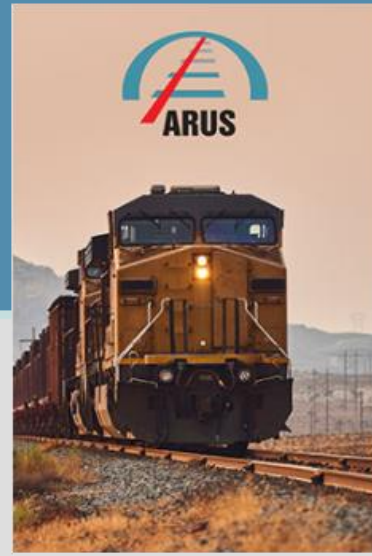
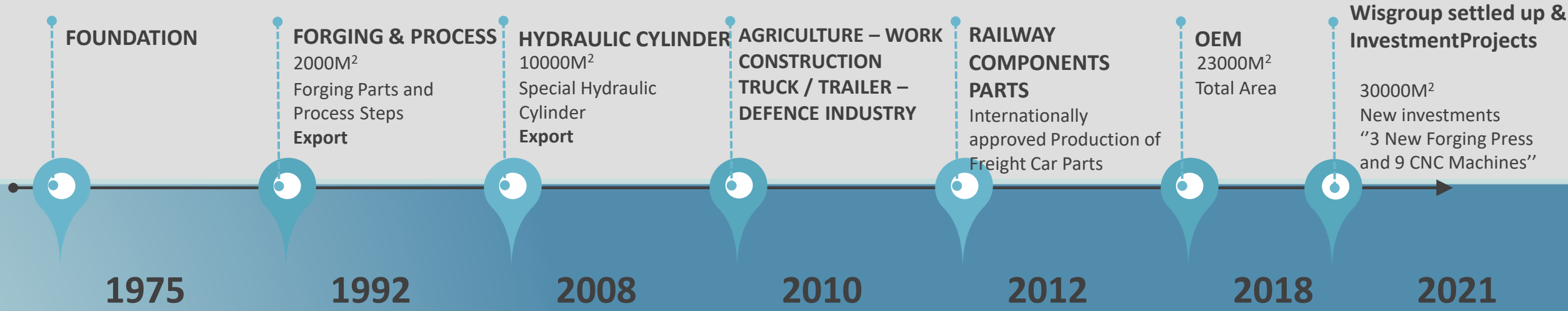


SOMETHING'S NEEDS POWER

WISGROUP COMPANIES

DEVELOPMENT



COMPANY PROFIL

In 1975, the first foundations thrown until the month of December 2012 FMC performs hot steel forging FORGING operations within the group of intellectuals, **30,000m²** of open space, working with a team on the **capacity of 1200 ton per month high quality** professional steel forging, Automotive, Defense, Industrial, construction machinery , agricultural machinery, railways and OEM sector for various industries and applications in the framework of the total quality approach, technology, self motivated, customer focused approach and served for 45 years.

QUALITY POLICY

It has high quality, most reasonable price and full-time production policy, it has aimed to continuously improve and design its competitiveness and sunday share.

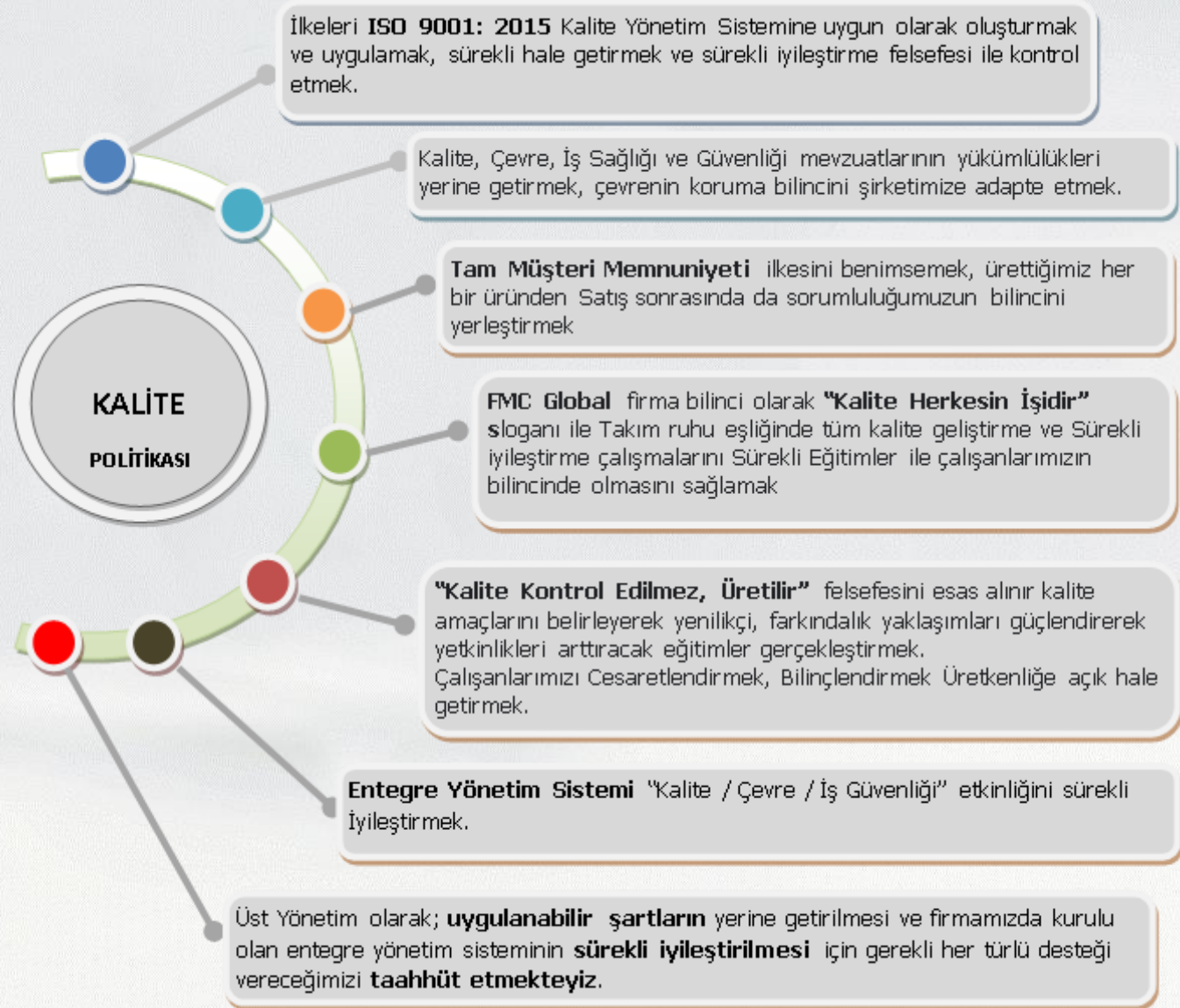
QUALITY

VISION

BECOME A LEADING COMPANY IN THE SECTOR IN THE SENSE THAT IT ADDS TO HOT STEEL, CASTING STEERING, SUSPENSION PARTS

MISSION

USING STEEL FORGING AND MACHINING METHODS UNDER ONE ROOF, WITH ITS AGILE STAFF, IT HAS ADOPTED THE PRINCIPLE OF SUPERIOR QUALITY AND JUST-IN-TIME PRODUCTION. IT IS A GLOBAL BRAND THAT MEETS THE NEEDS OF TODAY AND THE EXPECTATIONS OF THE FUTURE



CAPACITY

- **Hot Forging** 0,50 Kg until **300 Kg**
- **30.000 Kg** up to **Processing** capacity
- **6 mt** heat treatment in **Normalization** furnaces with a length capacity
- **Chrome – Cataphores – Galvanize – Zinc Phosphate** Surface Coating
- **Nondestructive testing** (MT – PT – UT - VT Level 2)

CAPACITY



- Germany
- France
- Poland
- Austria
- Slovakia
- Hungary
- Bosnia
- Croatia
- Romania
- Denmark
- U.S.A.
- Switzerland
- Portugal
- Spain
- England



80% EXPORT

TOTAL PARTS
5.000.000 QTY SHIPMENT HAS BEEN MADE

FORGED



Quality SYSTEM

ISO 9001



ISO 14001



ISO 45001



CERTIFICATES

Quality

ISO 9001:2015 (QMS)
ISO 45001:2018 (OHSAS)
ISO 14001:2015 (EMS)

QFORM Forging Analysis
ANSYS Analysis

CERTIFICATES

TSE EN 14732-2013
(Hydraulic)
EN 15085-2 EN / ISO 3834-2
(Railway)

EN 15566:2010
TSI WAG REG
HPQ-1 (DB)
CE Standart (King Pim)

PROCESSING



Product

Special OEM

R&D



EN 15085-2



LEVEL 2
[IIT-MT-PT]



ISO 3834-2

FORGING DEPARTMENT



Vatanını Seven İşini en iyi yapandır.
İlkesinden yola çıktık.

TOTAL 11 FORGING PRESS LINE

Hammer Blow	16.000 – 10.000 – 6.000 – 4.000 – 2.000 [x2]
Maxi Press	1600 – 1300 – 1000 (x2)
Counter Blow	30.000 LB



MACHINING DEPARTMENT



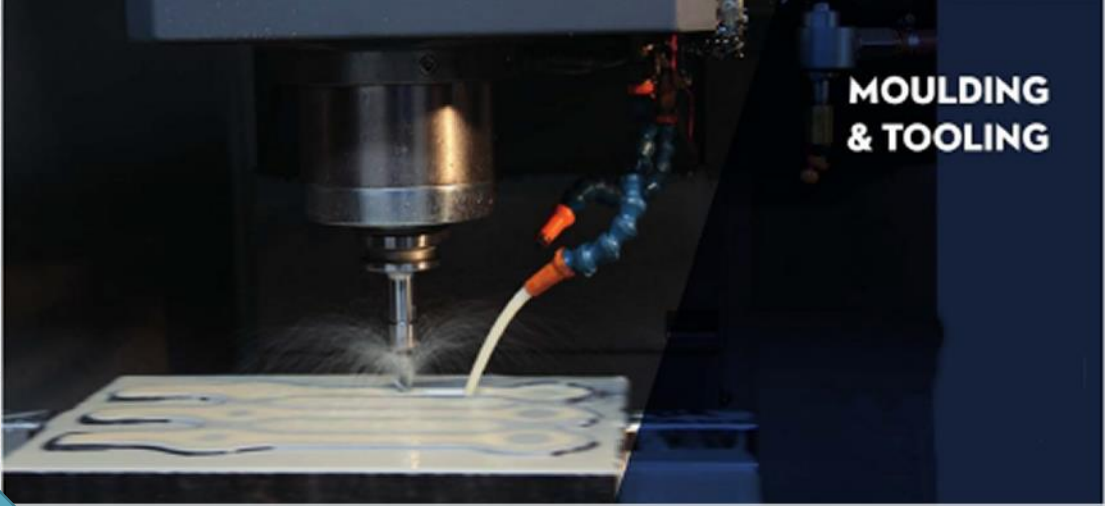
- CNC Horizontal and Vertical
- CNC Turning
- CNC Borwerk
- Universal Mechanical Turning

MOULD DEPARTMENT



EVERTHING IS UNDER THE ONE ROOF

CNC Vertical Processing Center



MOULDING
& TOOLING

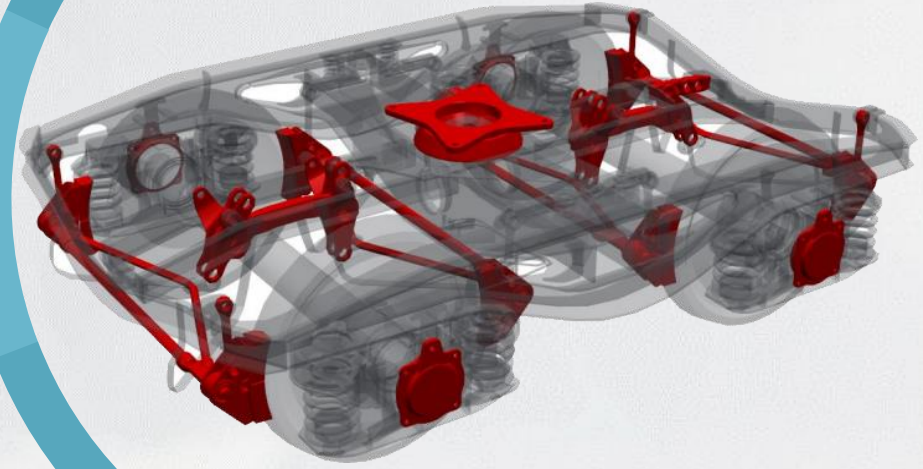


Other DEPARTMENT





TSI APPROVED FOR
COMPONENTS



RAILWAY "FREIGHT CAR" PRODUCT



MAX \varnothing 700

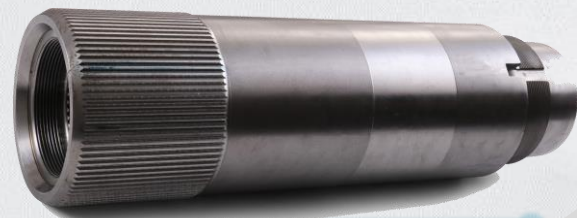
Machine
Capacity

MAX \varnothing 450
Grinding Outer
Capacity

MAX 6000mm
Grinding Length
Capacity



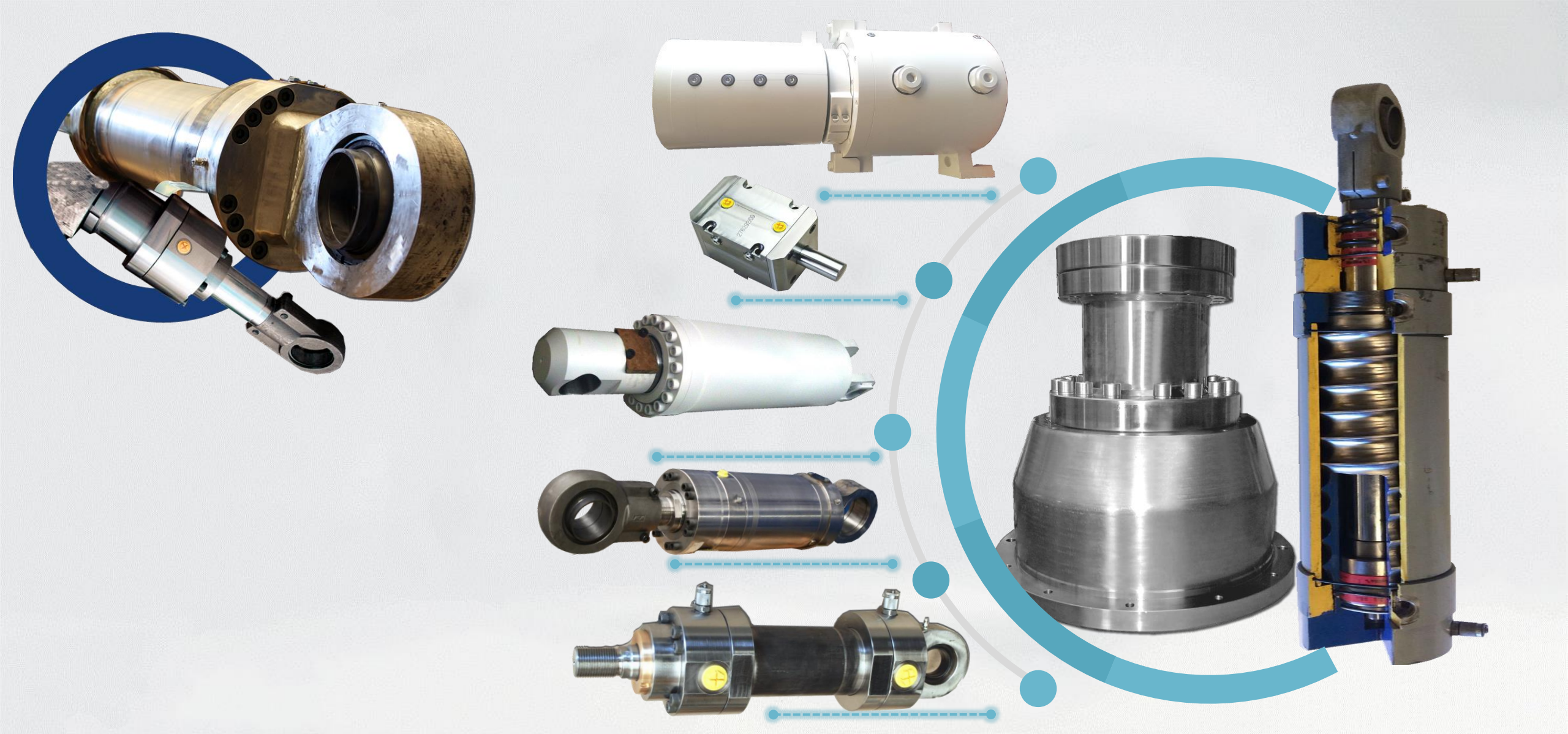
SHAFT PRODUCT



DEFENCE INDUSTRY



DEFENCE INDUSTRY



HYDRAULIC CYLINDER



Mechanical Test and Chemical Structure



Tensile and Impact Test



NDT - Non-Destructive Inspections

MT – PT – UT Level 2



3D Control Equipment

Quality Control
NOT CHECKED
Product
Produced Only



REFERENCE



KNORR-BREMSE

LIEBHERR

PACOMA

VOLVO

IFA GROUP

VOLKSWAGEN

WINKELMANN

PSA GROUP



DB(DEUTCH BAHN)

Ö.B.B

PKP

TÜLOMSAŞ

GREENBRIER

TUVASAŞ

SNCF

TÜDEMSAŞ



HAINZL

ATP
HYDRAULIC

ARDEN

C.F.C.



ROKETSAN / BMC

HUĞLU



CUMMINS

THANKS
FOR CO-OPERATIONS

F O R G I N G

M A C H I N E

C O M P O N E N T S

2. Organize Sanayi Bölgesi Ulukavak Sk. No:5 Selçuklu / KONYA

info@wisgroup.com.tr

www.wisgroup.com.tr

